



User Manual



Long Range System

GOLD HUNTER

SMART



INDEX

- **Section 1:**
Critical Warning
 - **Section 2:**
Overview
 - **Section 3:**
Definition of the main unit buttons & LEDs
 - **Section 4:**
The device features and specifications
 - **Section 5:**
Gold Hunter Smart parts assembly
 - **Section 6:**
Gold Hunter Smart device operation steps
 - **Section 7:**
The device parts and accessories
 - **Section 8:**
The technical specifications
- 



Critical Warning

- Please be sure that all precautions are taken against risks.
- Do not use your device while it is raining.
- Turn on the device after you make sure that all parts are in place and connected.
- Make sure that the device battery is fully charged before you start searching.
- If the indicator on the side of the device starts flashing, turn off the device and recharge the battery.
- When the battery will almost die the device will turn off automatically.
- It is recommended to read the user manual before starting on the device to understand everything and to avoid mistakes through the search.
- Be aware of (energy sources - phone networks - metals - mobile phones - electronic devices), and do not use any charger other than the original one of the device.
- The device main unit is under two (2) years warranty against all electronic breakdowns, any damages caused by user errors (falls, opening the main unit, hits, harms, etc.) are not covered within this warranty.
- Battery and charger are not under the warranty.
- You should strictly follow the instructions in this user manual to minimize faults and to use your device correctly.
- If the device is not used correctly, or there is a high rate of noise, in these cases the device will not be capable of confirming the target and determining the depth.

We wish you all the best of luck in your search.....



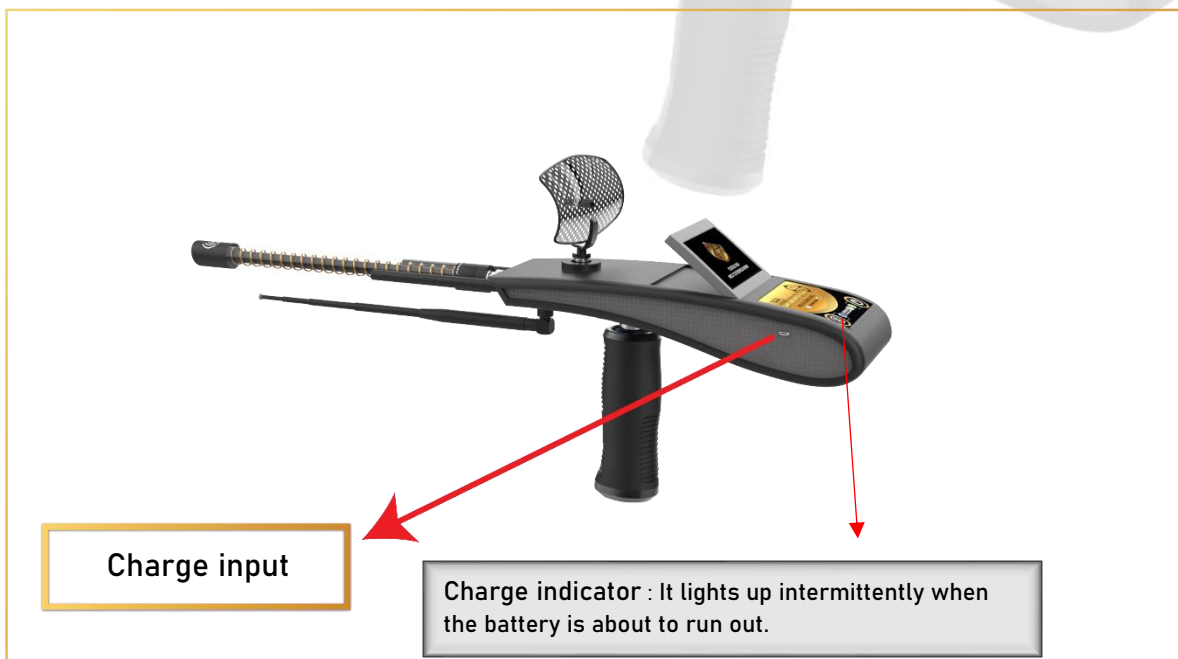
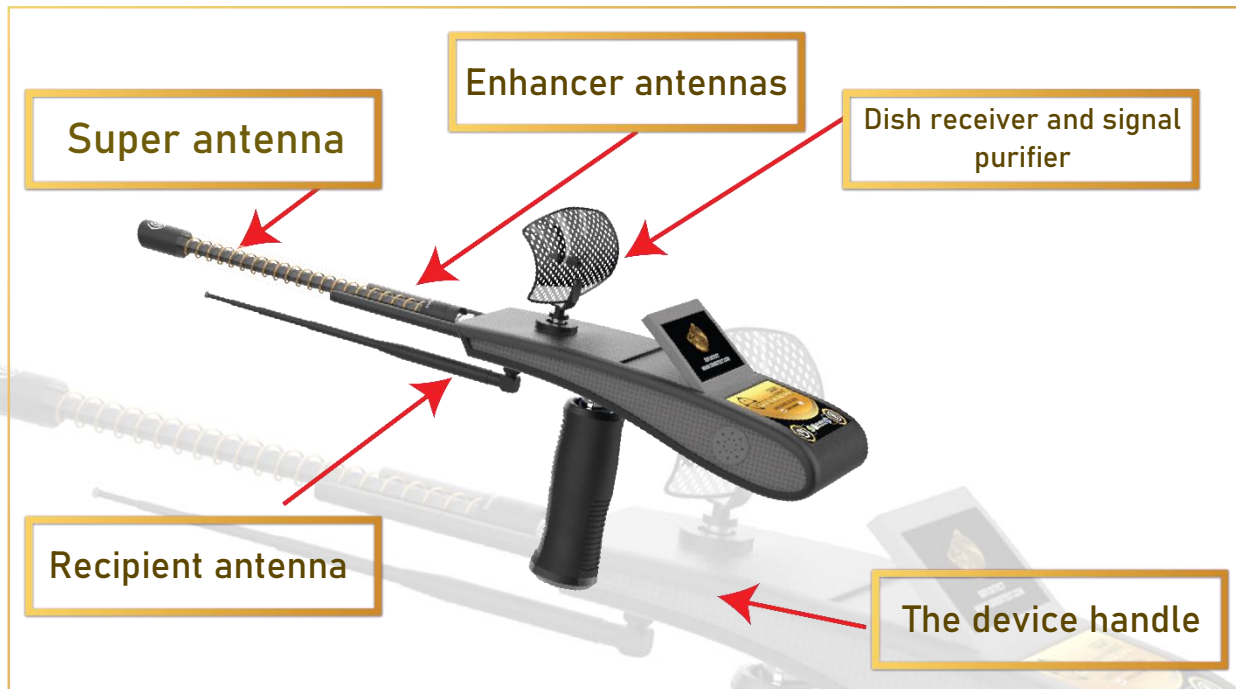
(Overview)

Dear customer,

“Thank you for choosing GOLD HUNTER SMART”

- ✓ A long-range system device with the addition of more systems and the development of the device's characteristics to the imaging sensor system and two-dimensional imaging technology.
- ✓ The Gold Hunter Smart device has multiple features to search for gold, buried treasures, precious metals, and diamonds underground.
- ✓ The system of searching for precious and non-precious metals: such as buried antique gold - raw gold - veins of gold - meteorites - silver - zircon - bronze - cobalt - coltan - mercury - copper - Lithium.
- ✓ Super speed in capturing targets and locating them accurately.
- ✓ Super Antenna which enables the device to cover large areas of research.
- ✓ The search depth of the Gold Hunter Smart device reaches 50 meters in the ground and the forward range is 3000 meters square.
- ✓ The device works in six languages: German - English - French - Spanish - Italian - Arabic.
- ✓ The Gold Hunter Smart device is one of the best German manufacturers. It has the European CE certificate according to international specifications, in addition to the international ISO 9001 certificate according to international specifications and standards.
- ✓ This device is designed to be compatible with its functioning in all countries and regions.

-Definition of the main unit buttons & LEDs

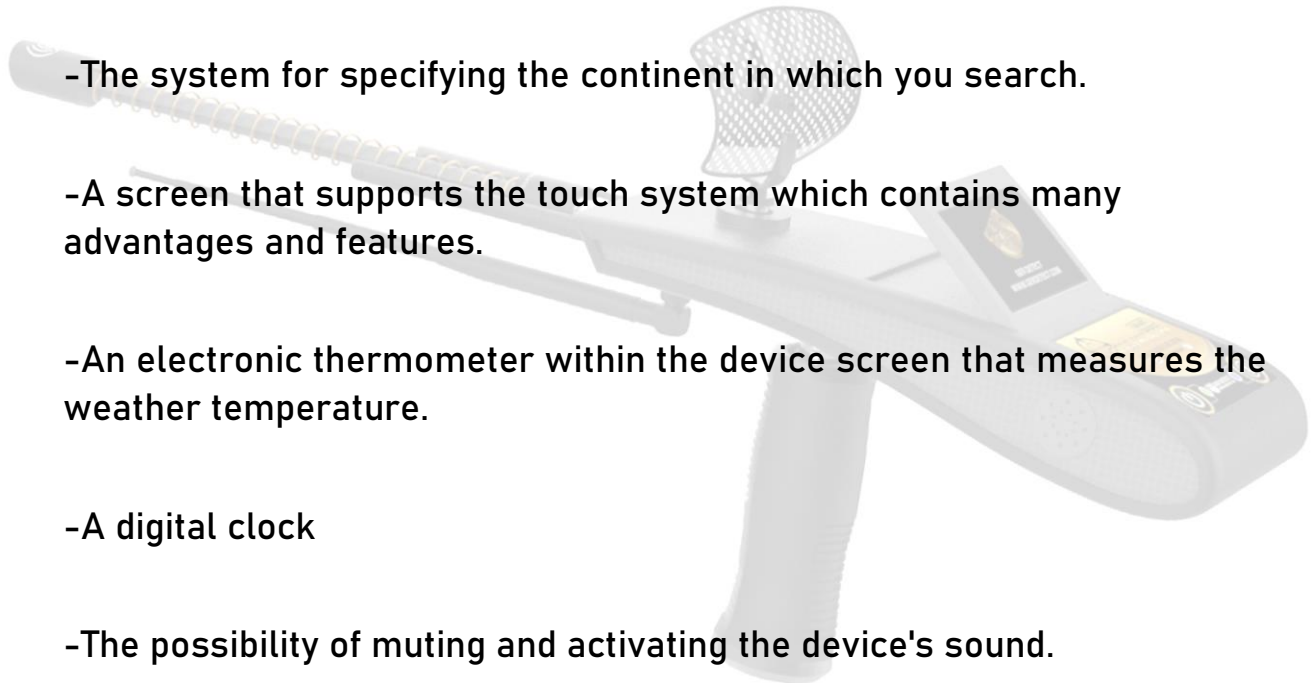




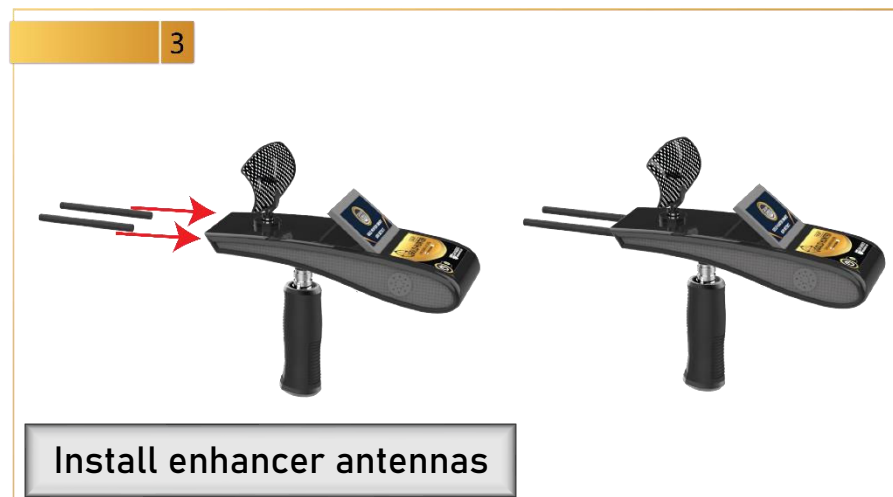
The device features and specifications

The Gold Hunter Smart device has multiple features to search for gold, buried treasures, precious metals, and diamonds in the ground:

- Super speed in capturing targets and locating them accurately.
- The system for determining the target depth easily and accurately.
- The system for specifying the continent in which you search.
- A screen that supports the touch system which contains many advantages and features.
- An electronic thermometer within the device screen that measures the weather temperature.
- A digital clock
- The possibility of muting and activating the device's sound.
- Super Antenna which enables the device to cover large areas of research.
- A radar search dish to receive and improve the signal.



Gold Hunter Smart device parts connection

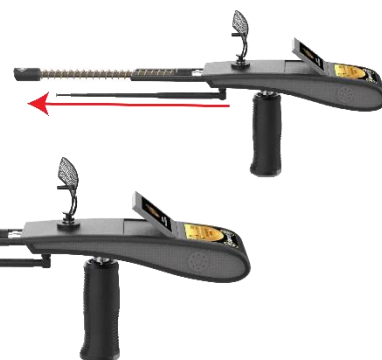




5



Install recipient antenna

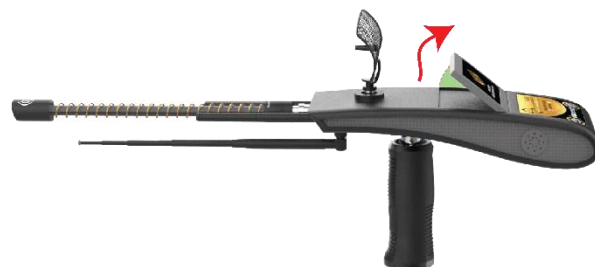


Increase the length of the antenna to raise the front-sense range of the device up to 3000 meters

5



Install the receiver dish for reference



Open the foldable screen

Gold Hunter Smart device operation steps

Power Button

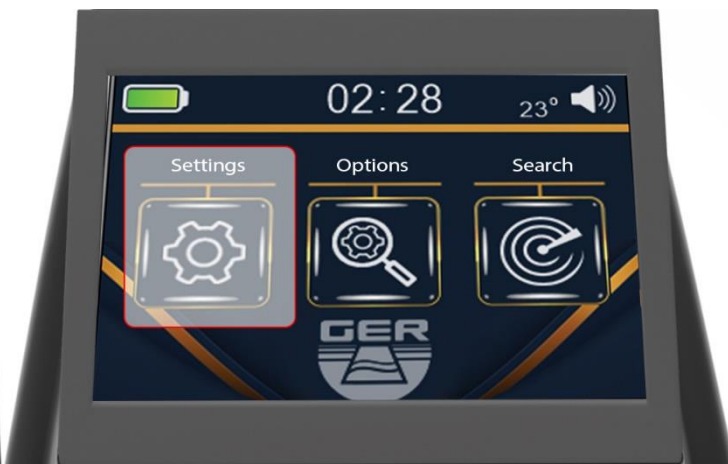


Turn on the device by pressing the power button for two seconds



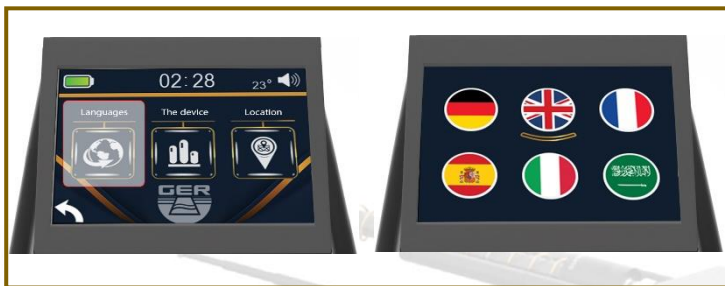
After turning on the device, the following data will appear on the main screen:

Battery level indicator - clock - temperature - activate and mute button.



1- Settings icon:

It contains the working languages of the device, which are:



German - English - French - Spanish - Italian - Arabic



Device settings icon through which you can set:

Sound level - brightness level - time settings - device information



Locate and choose the continent icon you want to search in.

This unique feature was added due to the different frequencies of underground minerals from one continent to another.



2- Search options:

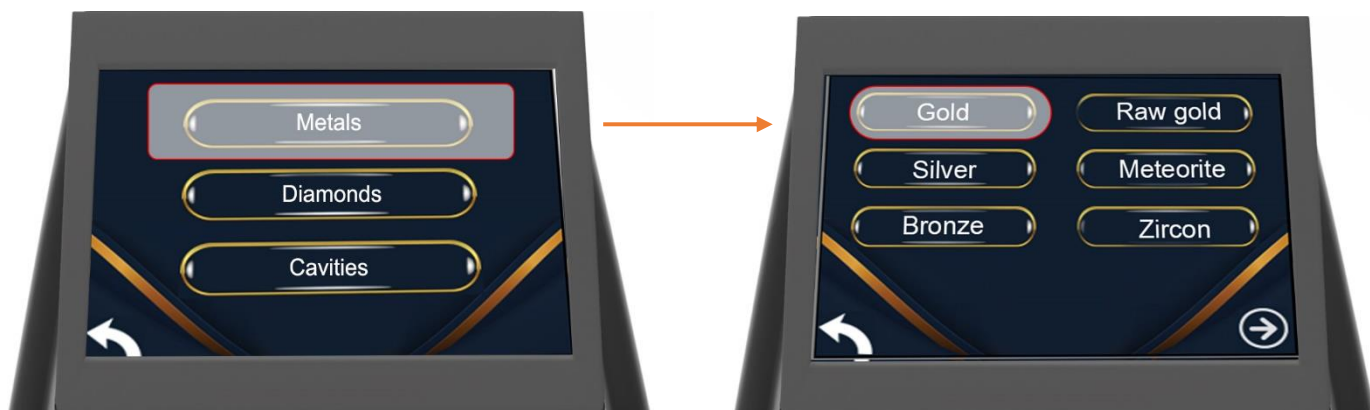
Choose the type of target you want to search underground.

Determine the front range of the device.



3- Search icon:

When you press the search icon, the device will directly start searching, depending on the preset settings saved by the prospector, which are (target type - front range - continent).



You can choose the target you want to search for.
(Example: Gold), which also appears in the front range screen

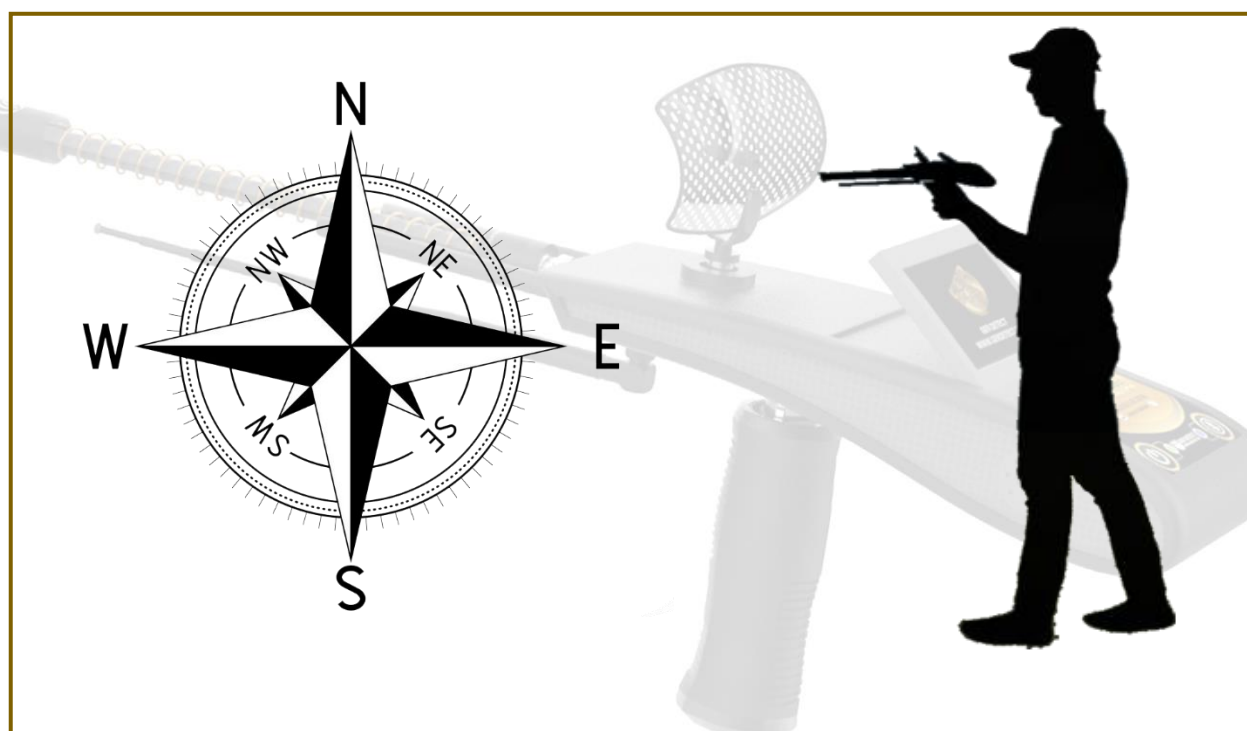


Then choose the front range you want to reach (from 100 meters to 500 meters - 1000 meters - 1500 meters - 2000 meters - 2500 meters - 3000 meters) (for example, 500 meters)



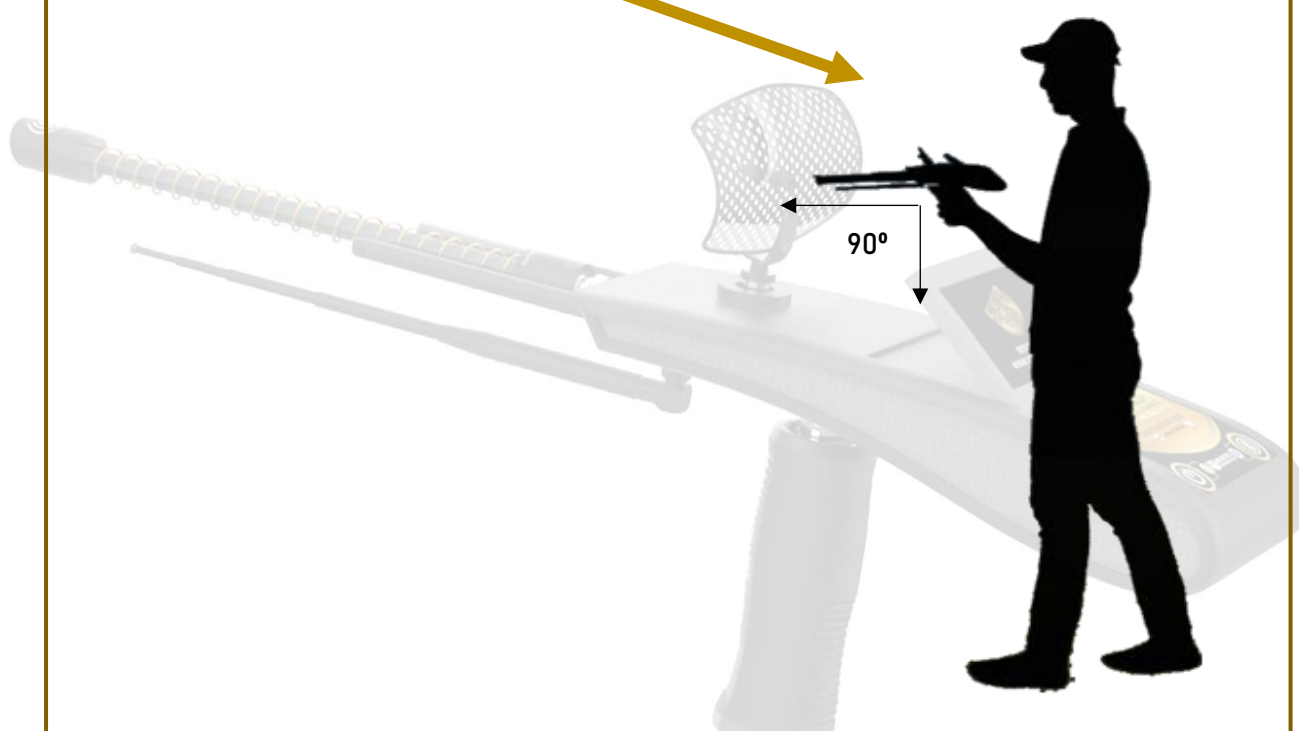
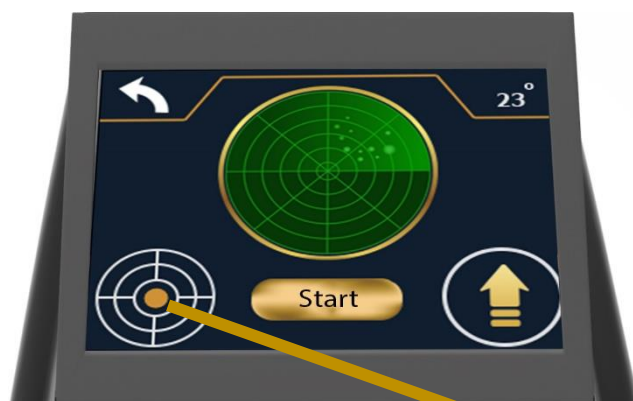
Example: If the front range of the target to be searched is expected to be within an area of 500 square meters, it is sufficient to specify the front range within 500 meters.

But if the front range of the target to be searched is unknown, you can specify the front range up to 3000 meters.



Note: The explorer must stand facing north to south.

Whereas, the ionic fields are radiation emitted by gold, minerals, buried treasures, and voids after being underground for a long time, and their overlap and interaction with the soil and the nature of the earth's formation and its regularity with magnetic lines to the north and south.

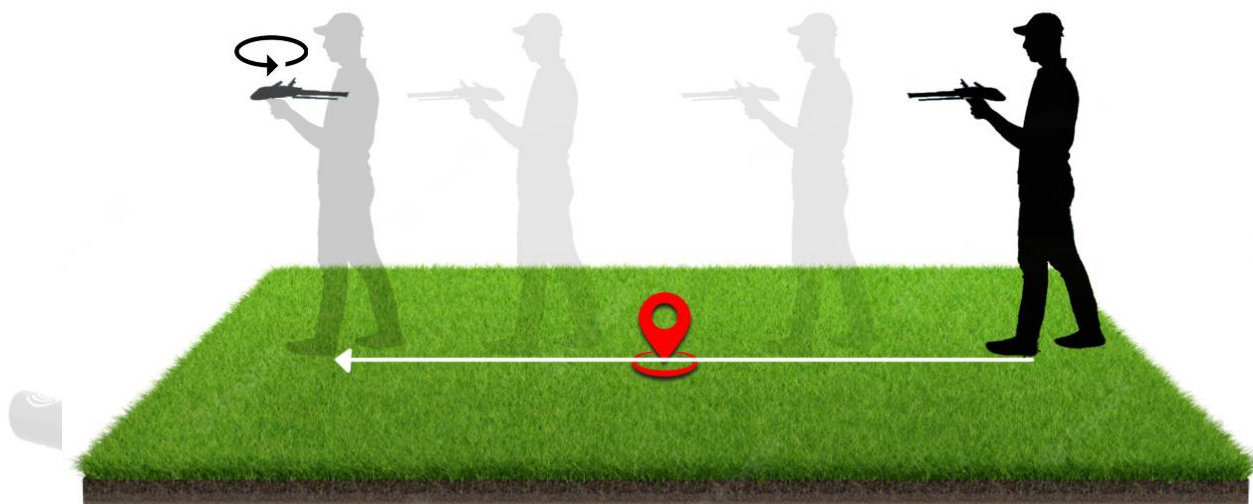


The balance of the device must be maintained during the search by fixing the yellow dot in the middle of the circle icon.

The device will start sending and receiving signals directing you towards the target with a continuous sound.

When getting any signal, the device will directly turn towards the target with the target direction indicator appearing on the screen and the sound accelerating.

Confirm the direction of the target from all four directions to ensure that the target is reached more precisely.



Follow the signal and when the device turns back you will have passed the target

Limit the search site by placing a mark that will be the center for target confirmation.

Then confirm the location of the target from the four directions (from south to north - from north to south - from west to east - from east to west).

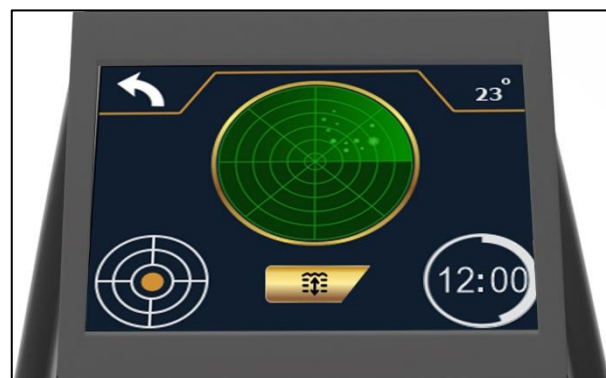
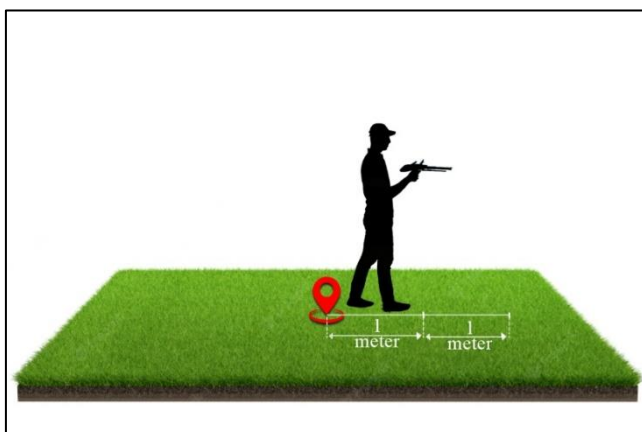
When standing above the center of the target, the device will rotate directly above the target.

North to south

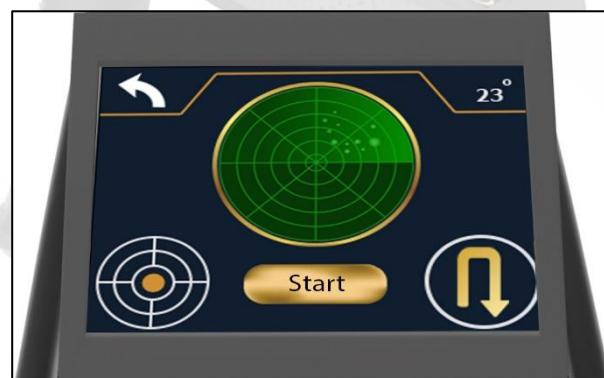
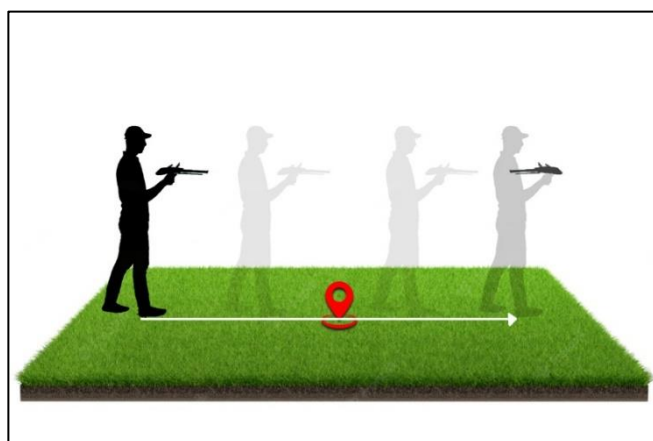
South to north

East to west

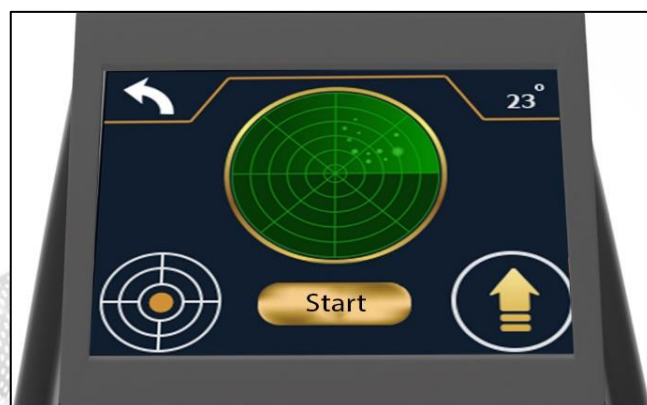
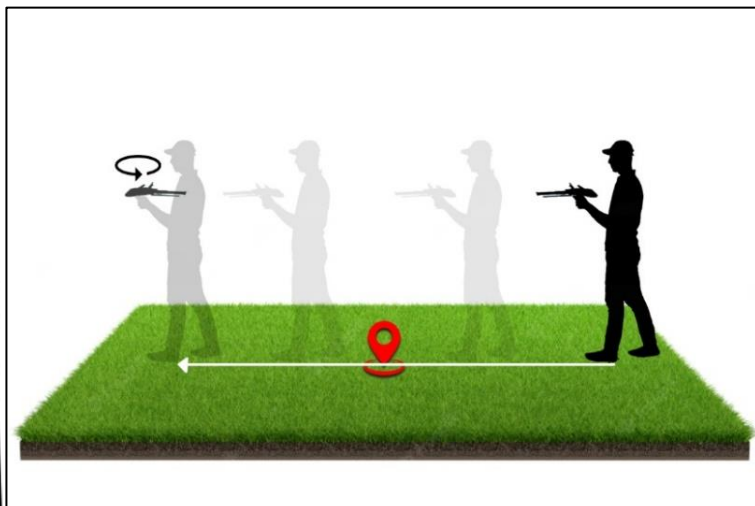
West to east



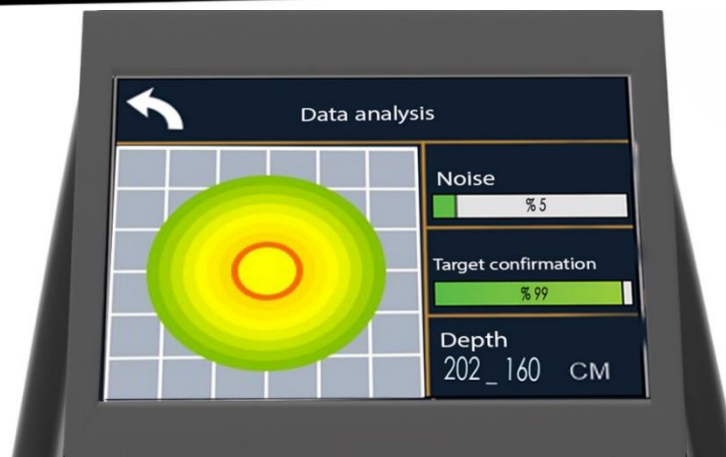
After you have confirmed the location of the target, click on the depth button to determine the depth and then move away from the center of the target a distance of at least two meters.



Point the device towards the target while maintaining the balance of the device, press the start button, wait until you hear a beep from the device, then walk towards the target until the device rotates backwards with the appearance of an icon indicating the rotation of the device towards the back.



Turn in the opposite direction, press the start button, wait until you hear a beep emanating from the device, and the icon shifts from the rotation position to the forward position, then walk until the device rotates backwards, the device will analyze and show the final results automatically.



The following results and conditions will appear on the device screen when confirming the presence of a target:

Noise: It is the percentage of noise in the search area, which results from the proximity of (energy sources - phone networks - metals - mobile phones - electronic devices)

Target confirmation: the percentage of confirmation of the presence of the target in the search area.

Depth: The depth within which the target is likely to be located.

Example: the depth is between 160 cm to 202 cm.

-Noise 5%

- Target confirmation 99%

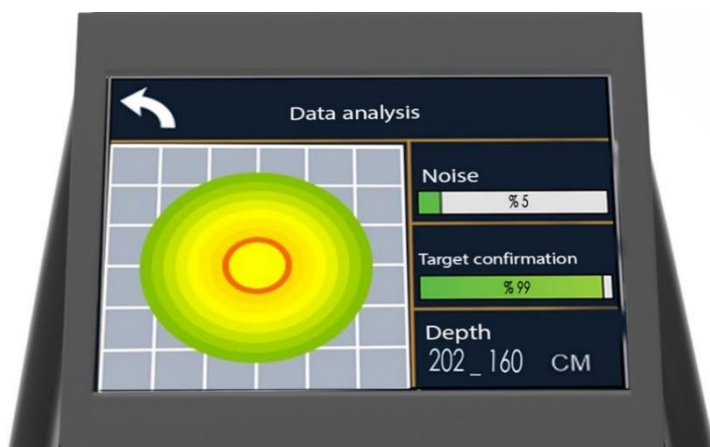
-In addition to a **(2D) two-dimensional** figure that expresses the percentage of void or metal within the detected target.

Important Note: The ratio to analyze the results in the Gold Hunter Smart is as follows:

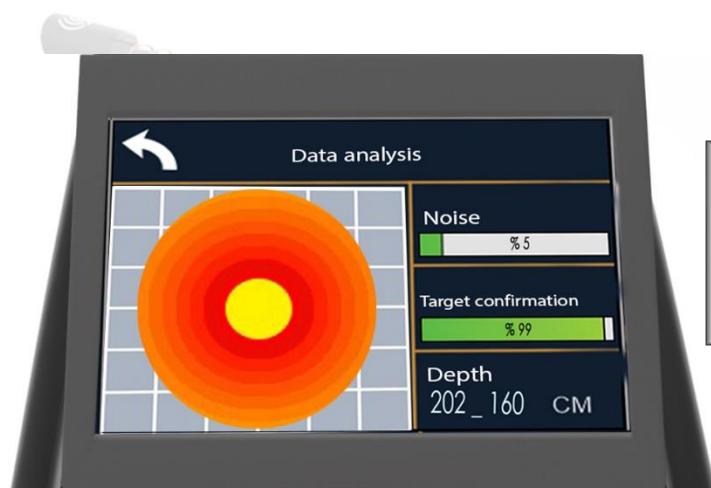
If the result of the noise is high and the target confirmation rate is low: The device does not give depth, it is rather to retry the search again.

If it gives us depth and the noise percentage is greater than 30% It is preferable to try the search again.

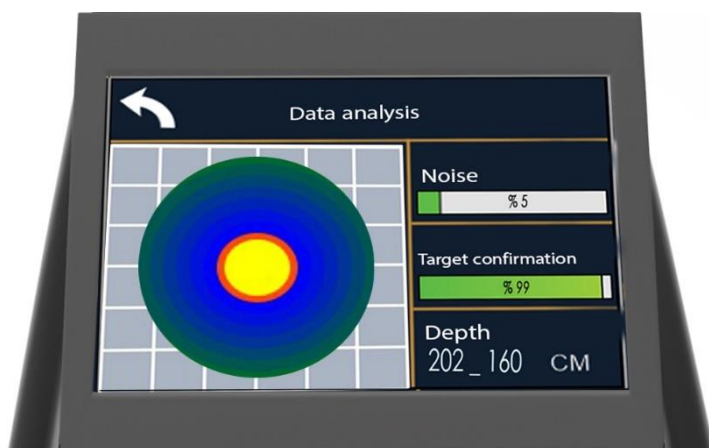
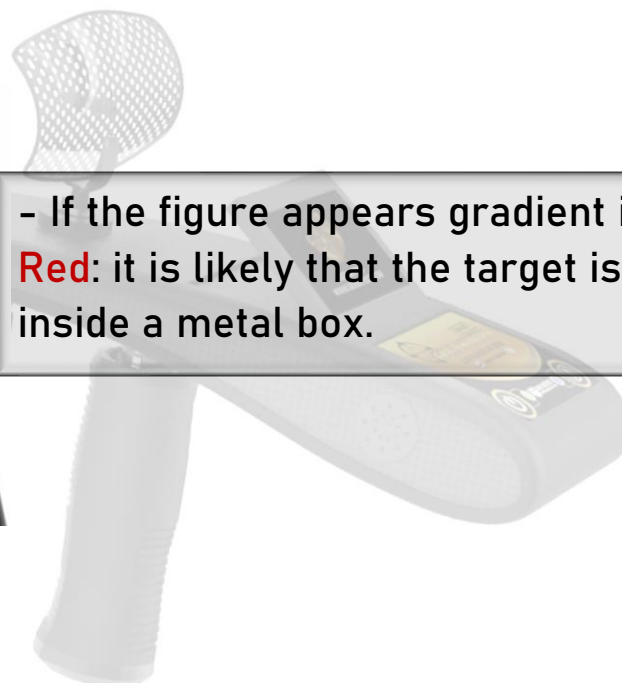
if the target confirmation rate is less than 90% it is recommended to try the search again.



- If the figure appears in **Green** and **Yellow**: the target is buried in the soil without being inside a void or a metal box.



- If the figure appears gradient in **Red**: it is likely that the target is inside a metal box.



- If the figure appears gradient in **Blue**: it is likely that the target is within a void.












Note: The target must be buried for many years so that by the time and the interaction with the soil's composition, an ionic field will be formed which will enable the device to detect the target.

Therefore, testing the device on metals laid on the ground or newly buried under the ground will not show the real capacity and functionality of this device to detect the target or to reach larger depths.

The reason for that is that the ionic fields are radiations from gold and other metals that have been in the ground for a long time and have intersected and interacted with the soil and the nature of the earth as well as having been regulated with magnetic fields north and south – These features do not apply for freshly buried or surface laid gold and other metals.



The device parts and accessories

	A carrying and protective device case made of shock-resistant plastic
	The main unit of the device
	The device handle
	The device charger
	The car charger
	Super antenna
	Enhancer antennas
	Recipient antenna
	Dish receiver and signal purifier



The technical specifications

Gold Hunter Smart Technical Specifications	
Audio Output	Dynamic speaker frequency range: 350~5500 Hz Sound output: 84 ± 3dB
Liquid Crystal Display (LCD)	touch screen full color 320 x 240 px
Length	Device: 220 mm
	The device with antenna of 425 mm (not extended)
	Device with antenna 695 mm (extended)
Frequency	3.2 _ 16 KHz
Data processing speed	180 MHz
Operating Temperature Range	0 C° to 70 C°
Operating Humidity Range	Up to 95 % non-condensing
Storage Temperature Range	- 20C° to 70C°
Storage Humidity Range	Up to 98 % Relative Humidity
Operating Time (18 Wh Battery)	10 Hours
Waterproof Rating - Detector	Not waterproof (weatherproof only)
Li-ion Battery Technical Specifications	
Type	Li-ion Rechargeable Battery - internal Battery
Output Voltage	Li-ion 3.6 VDC
Capacity	Li-ion 18 Wh
Run Time	10 Hours
Battery Operating Temperature	0 C° to 50 C°
Battery Storage Temperature	- 5C° to 70C°
Li-ion Battery Charger Technical Specifications	
Operating Temperature	0 C° to 50 C°
Storage Temperature	- 30 C° to 80 C°
Input Voltage	90 → 250 VAC 50→60 Hz
USB Output Current	5 VDC / 2100 mA
Other Technical Specifications	
Total weight	2720 g
Device weight	325 g
Battery weight	40 g
Bag weight (empty)	2160 g
Bag dimensions	42.5 cm x 17.5 cm x 28 cm